

参数	
准确度	± 1% at 100% stroke
重复精度	≤ 0.05% at 100% stroke
流路	Borosilicate glass, PTFE, PFA, CTFE, UHMW-PE, or ceramic
重量	3.65 lbs (1.65 kg)
RoHS	Yes
推力	20 lbf. (9.07 kgf)
供电	
电压	24 VDC
电流	850 mA maximum
注射器和驱动	
注射器规格	25 µL to 50 mL
注射器材料	Glass barrel, PTFE, PCTFE, or PFA insert, stainless steel or aluminum plunger with PTFE coating, PTFE or UHMW-PE plunger tip
精度	Selectable 6,000 steps (standard) / 48,000 steps (high)
注射器驱动	Stepper Motor driven lead screw and optical encoder
行程长度	60 mm
注射器速度	2 second to 100 minutes per stroke
阀和驱动	
阀驱动速度	250 ms per 120° rotation
阀驱动	Stepper motor with optical encoder feedback
阀连接	¼" – 28
阀材料	CTFE, PTFE, ETFE, or ceramic
流路直径	All valves: 0.060" (1.524 mm) unless otherwise noted
通讯	
类型	RS-232, RS-485, or CAN
协议	Terminal or standard
波特率	9,600 or 38,400 (RS-232 or RS-485); 100,000 or 125,000 (CAN)
数据位	8
奇偶校验	None
停止位	1, Half Duplex
链长度	Up to 16 individual pumps
可编程范围	Ramps, cutoff velocity, backlash compensation, syringe speeds, loops, on-the-fly speed changes, terminate moves and delays, error detection, valve rotation selection, enhanced "h" Factor capabilities including valve rotation clockwise and counter-clockwise, 15 location method storage
操作环境和存储范围	
操作温度	59 °F (15 °C) to 104 °F (40 °C)
操作湿度	20% to 95% relative humidity, non-condensing
存储温度	-4 °F (-20 °C) to 149 °F (65 °C)
存储湿度	20% to 95% relative humidity, non-condensing

## PSD/6 高精度微量注射泵



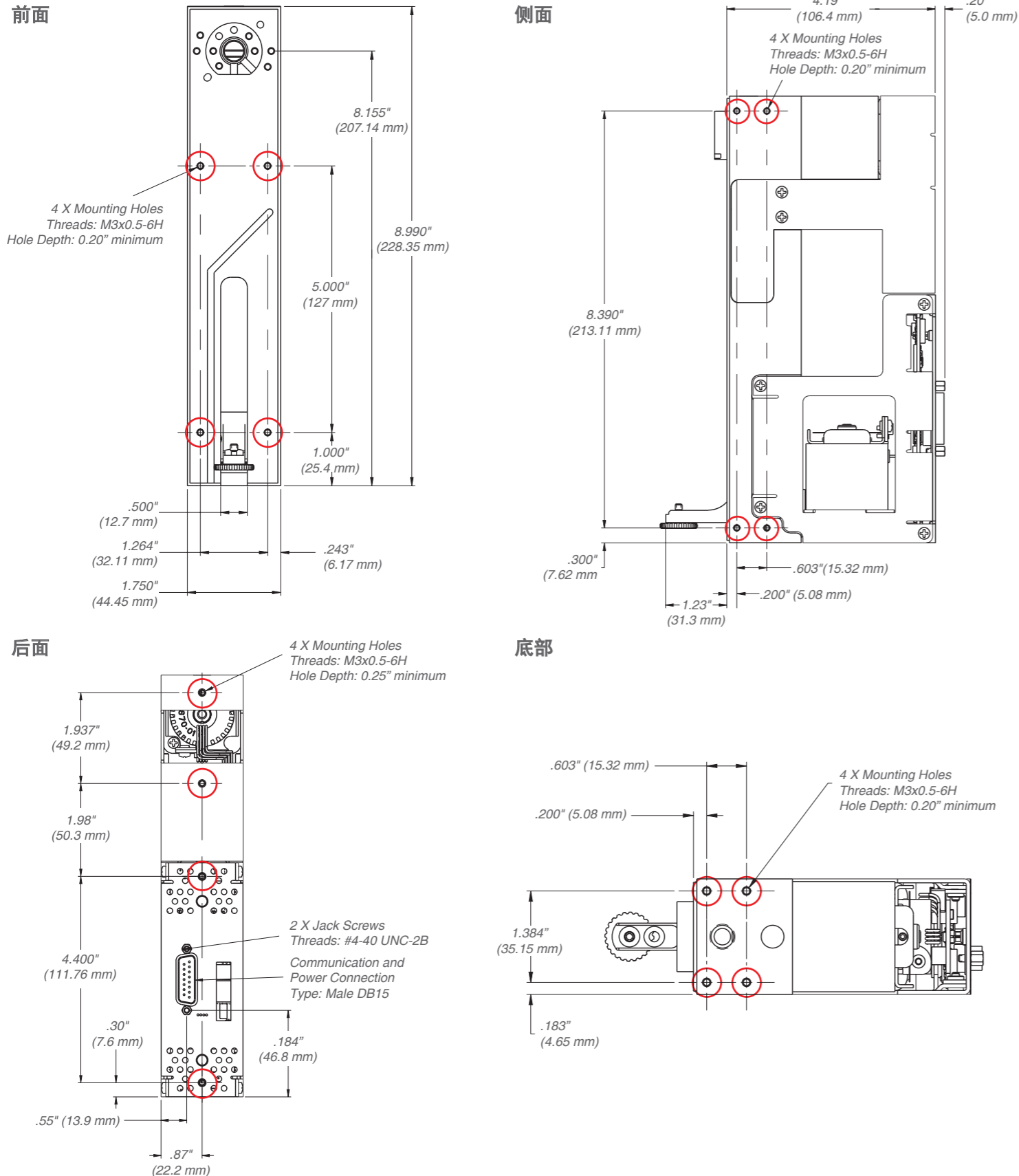
## 紧凑型高精度注射泵可以精确移液至50mL

PSD/6注射泵是Hamilton公司PSD家族高精度微量注射泵系列中的最新一员。它可以选配各种分配阀和注射器来满足大部分用户对高精度移液的需求。可以最多16个泵一起串联起来用。

PSD/6注射泵优异的性能为用户的研发和应用提供了保证和达到预期的目的。

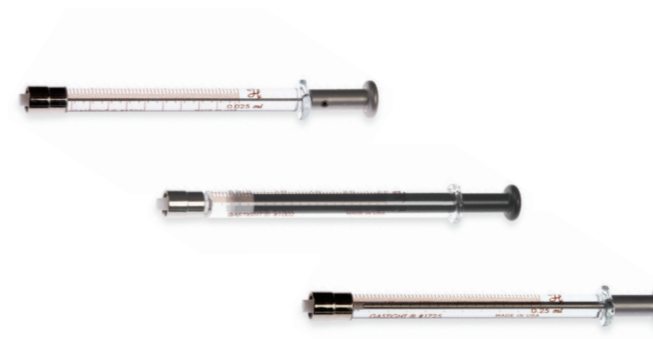


## PSD/6产品尺寸图



## PSD/6高精度注射泵

Description	Part Number
PSD/6 Precision Syringes Pump	63133-01
PSD Starter Kit Containing Software CD, Demo Communication Cable, Serial-to-USB Adapter, and Power Supply	64316-04
Demo Communication Cable	57025-01
Power Supply	4833-01

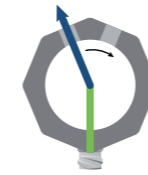


## 用于PSD/6的注射器

Volume	60 mm Long-Life Syringes P/N	Standard PTFE Tip Syringes P/N	Pressure Rating
25 µL	N/A	80222	1000 psig (68.9 bar)
50 µL	8300-15	80922	
100 µL	8300-20	81022	
250 µL	8300-25	81122	500 psig (34.5 bar)
500 µL	8300-30	81222	
1 mL	8300-35	81320	200 psig (13.8 bar)
2.5 mL	8300-40	81420	
5 mL	8300-45	81520	
10 mL	8300-50	81620*	200 psig (6.9 bar)
25 mL	N/A	82521**	
50 mL	N/A	85021**	

\* Directly compatible with valve 7992-01, 7993-01, 9998-01, and 59943-01. Use adapter (P/N 209651) for compatibility with all remaining valves listed below.  
 \*\* Directly compatible with valve 9998-01 and 59943-01. Use adapter (P/N 209651) for compatibility with all remaining valves except 7992-01 and 7993-01.

## 用于PSD/6的阀



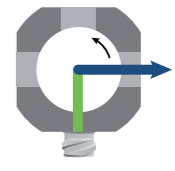
**Fluid Logic:** Y-Valve  
**Valve Description:** "Y" Flow Path  
 Two ports, plus syringe port  
**Ceramic Part Number:** 8778-01  
**PTFE/CTFE Part Number:** 57252-01\*



**Fluid Logic:** Y-Block  
**Valve Description:** Static non-switching Y-block  
**PTFE/CTFE Part Number:** 9537-01



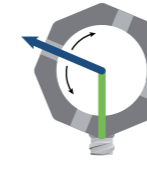
**Fluid Logic:** 3-3  
**Valve Description:** "T" Flow Path  
 Two ports, plus syringe port  
**Ceramic Part Number:** 8063-01  
**PTFE/CTFE Part Number:** 58889-01



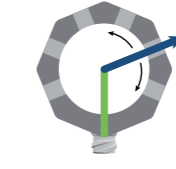
**Fluid Logic:** 3-5  
**Valve Description:** Distribution Flow Path  
 Three ports, plus syringe port  
**Ceramic Part Number:** 7991-01



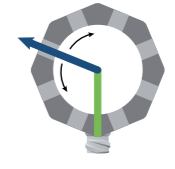
**Fluid Logic:** 4-2  
**Valve Description:** 90° Flow Path  
 Three ports, plus syringe port  
**Ceramic Part Number:** 9234-01



**Fluid Logic:** 4-5  
**Valve Description:** Distribution Flow Path  
 Four ports, plus syringe port  
**Ceramic Part Number:** 7992-01



**Fluid Logic:** 6-5  
**Valve Description:** Distribution Flow Path  
 Six ports, plus syringe port  
**Ceramic Part Number:** 9998-01



**Fluid Logic:** 8-5  
**Valve Description:** Distribution Flow Path  
 Eight ports, plus syringe port  
**Ceramic Part Number:** 7993-01, 59943-01

\* Valve 57252-01 has a 0.059" (1.499 mm) fluid path diameter.  
 All tubing connections are compatible with 1/4" x 28 flanged or flangeless fittings.  
 All valves have a pressure rating of 100 psi. Higher pressure ratings are available upon request.  
 All valve housings are aluminum. Stainless steel, CTFE, and PEEK housings are available as a custom option.

